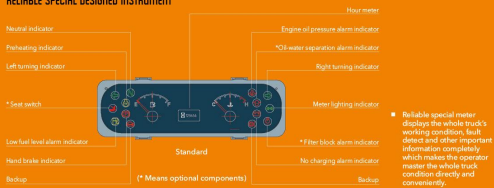


HELI

RELIABLE SPECIAL DESIGNED INSTRUMENT



Standard configuration	Optional
Hour meter	Overhead guard
Horn	Standard fork
Oil pressure alarm	Neutral gear switch
Control valve	Hydraulic circuit of filter
Wholly hydraulic powered steering	Electro hydraulic changing over
Rubber pad	Intelligent shift
Busbar	Speed limiter valve
Rear view mirror	Oil level gauge
Front combined lamp (LED light)	Charging indicator
Transmission oil filter	Wide view mast
Engine flame out device	Air intake device
Ratchet type parking brake	Durable tire with decorative pattern
Water temperature meter	Lifting and tilting operating handles
Driver's tools	Traction pin
Rear combined lamp(LED)	Semi-suspension seat
Reversing buzzer	Hydraulic oil dipstick
Til lock valve	Overhead guard rain cover
Til adjustable steering column	Torque converter oil dipstick
Back view mirror	Combined instrument
	Driver's cab
	Warning light
	High air exhausting device
	Double air cleaner
	Suspension seat
	Fork extension
	Heater
	Split type
	Wind shield
	Purifying muffler
	Fire extinguisher muffer
	Fire extinguisher
	Rear working light
	Air conditioner (certain type)
	OPS(traveling function)
	Torque converter oil temperature meter
	Tilting cylinder sleeve
	Steering cylinder sleeve
	User-specified color
	Optional attachments
	Slip
	Full LED light assy
	Power switch
	Reversing voice speaker
	Universal key
	Charged 10km/h alarm
	Electric fan
	OPS(traveling function and loading function)

HELI 安徽合力股份有限公司
 ANHUI HELI FORK LIFT CO., LTD.
 A200 No.888 Fangxing Street, Economic
 Development Zone, Hefei, P.R.China
 TEL: (86) 551 (0)551-35000, (0)551-350226, (0)551-35022105
 FAX: (86) 551 (0)551-350000
 WEBSITE: http://www.helitruck.com

AUTHORIZED DEALER

* Our products are subject to improvements and changes without notice.
 2015 144 copyright
 Catalog No.2015-02 HELI TRUCK



HELI
LIFTING THE FUTURE

TOP 3 FORK LIFT MANUFACTURER AND SALES
 IN CHINA FOR CONSECUTIVE 24 YEARS

G SERIES INTERNAL COMBUSTION COUNTERBALANCED FORKLIFT TRUCK 5-10 t

Technical features remarkably improved

Damping

With suspension damping structure on overhead guard(cab) and optimized design for the transmission, the whole truck's vibration reduced a lot and relieve driver's fatigue greatly.

Noise reduction

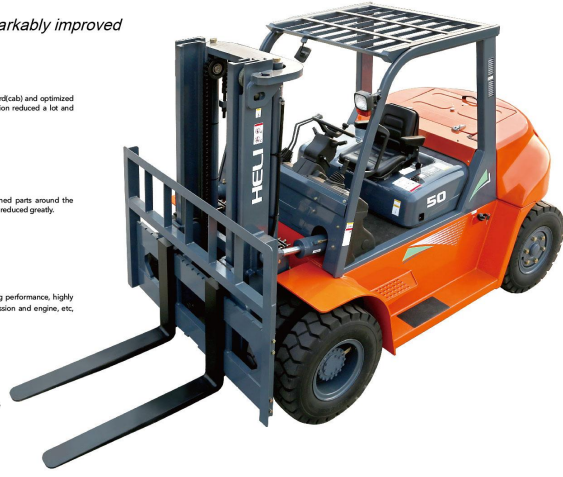
Equipped with fully sealed cab and optimize designed parts around the engine, noise nearby ear and the truck sound level are reduced greatly.

Heat dissipation

With the optimized cooling system and great cooling performance, highly improved the reliability and durability of the transmission and engine, etc, many key parts.

Energy efficiency

With optimized hydraulic system, the truck is more energy-efficient and lower fuel consumption.



G series / INTELLIGENT ENVIRONMENT-FRIENDLY

Comfort

Man-machine engineering design improves operation comfort; wide view lifting system improves vision.

Intelligent gear shifting

With electronic-hydraulic reversing system as standard configuration, make operation more light and easy; The updated new intelligent gear shifting system could avoid starting with second gear, improves the transmission box's reliability.

Maintainability

Wider internal space, more reasonable parts layout and 80°hood opening angle make maintenance easy.

Reliability

Key parts like frame and mast apply CAE top-down design to improve their strength and make the truck tough.





Manufacturer and technical parameters

Characteristics	HELI				
Model	CPD50	CPD60	CPD70	CPD85	CPD100
1.01 Manufacturer	HELI				
1.02 Model	CPD50	CPD60	CPD70	CPD85	CPD100
1.03 Power type	Diesel				
1.04 Rated capacity	5000	6000	7000	8500	10000
1.05 Load center	600				
1.06 Driving mode	Sit-on type				
Dimensions					
2.01 Mast height extended (with backrest)	H2	4400	4400	4400	4420
2.02 Max. fork height	H	3000	3000	3000	3000
2.03 Mast height lowered	H1	2500	2500	2500	2700
2.04 Free lift	H3	200	200	200	200
2.05 Backrest height (calculated from the fork surface)	H13	1360	1350	1345	1360
2.06 Overhead guard clearance (from face of seat)	H6	1060	1060	1060	1060
2.07 Overhead guard height	H4	2450	2450	2450	2450
2.08 Overall length (with forks)	L	4710	4790	4840	5180
2.09 Overall length (without forks)	L'	3490	3570	3620	3955
2.10 Front overhang	L2	595	600	707	722
2.11 Rear overhang	L3	600	675	720	755
2.12 Wheel base	L1	2300	2300	2300	2375
2.13 Traction-over-center height	H9	410	410	410	520
2.14 Min. Ground clearance (from bottom of mast)	H5	200	200	200	250
2.15 Truck body width	W	2045	2045	2045	2165
2.16 Lateral fork adjustment (outside of fork) (max/min)	W6	300/1835	300/1835	368/1944	429/2060
2.17 Front tread	W3	1520	1520	1520	1600
2.18 Rear tread	W2	1700	1700	1700	1700
2.19 Min. Turning radius (external)	r	3240	3300	3370	3650
2.20 Min. Turning radius (internal)	r'	200	200	200	200
2.21 Min. Intersecting angle	Ra	3200	3260	3330	3690
2.23 Mast tilt angle (forward/rear)	α/β	6°/12	6°/12	6°/12	6°/12
2.24 Fork size	L4	55X120X150	60X120X150	65X120X150	70X120X170
Specifications					
3.01 Wheel number (front/rear)	4X2				
3.02 Type (type/front/rear)	Pneumatic type				
3.03 Type size (front)	8.25-15-14PR				
3.04 Type size (rear)	8.25-15-14PR				
Specifications of the brake and transmission devices					
4.01 Battery (voltage/capacity)	VIAH				
4.02 Service brake	Powered brake pedal type				
4.03 Parking brake	Mechanical hand brake lever type				
4.04 Oil tank capacity	160				
4.05 Transmission type	Intelligent gear shifting				
4.06 Transmission number of speed (gear/low)	2/2				
Truck specifications					
5.01 Max. Traveling speed (loaded/unloaded)	km/h	24/29	24/29	24/29	24/28
5.02 Lifting speed (loaded/unloaded)	m/min	510/530	510/530	500/530	390/420
5.03 Lowering speed (loaded/unloaded)	m/min	WITHOUT LOADx300 WITH FULL LOADx600			
5.04 Max. Draw bar (loaded)	kN	63	63	62	58
5.05 Max. Gradability (loaded/unloaded)	%	38/19	35/19	32/19	23/20
5.06 Weight (incl. included)	kg	8300	9050	9650	11550
5.07 Axle load (loaded/unloaded)	kg	11800/1300	13300/1370	14600/2050	17760/2150
5.08 Axle load (unloaded/unloaded)	kg	4130/4170	4066/4995	3870/5780	5082/4648
Engine specifications					
6.01 Engine manufacturer (model)	XCHAI/CA110				
6.02 Engine rated power/international speed	kW/ps	83/2200			
6.03 Engine rated torque/international speed	km/ps	418/1400			
6.04 Cylinder number	4				
6.05 Engine displacement	L	4.4			

Optional engine model and truck main specifications

Truck specifications	CPD50	CPD60	CPD70	CPD85	CPD100	CPD50	CPD60	CPD70	CPD85	CPD100	CPD50	CPD60	CPD70	CPD85	CPD100	CPD50	CPD60	CPD70	CPD85	CPD100			
Manufacturer	CPD50	CPD60	CPD70	CPD85	CPD100	CPD50	CPD60	CPD70	CPD85	CPD100	CPD50	CPD60	CPD70	CPD85	CPD100	CPD50	CPD60	CPD70	CPD85	CPD100			
Max. Traveling speed (loaded/unloaded)	km/h	24/29	24/29	24/29	24/29	25/29	25/29	25/29	25/29	25/29	25/29	26/30	26/30	26/30	26/30	26/30	26/30	26/30	26/30	26/30			
Lifting speed (loaded/unloaded)	m/min	530/550	530/550	510/540	390/420	390/420	550/570	550/570	550/570	550/570	400/430	330/350	450/470	440/470	420/440	425/435	425/435	425/435	425/435	425/435			
Lowering speed (loaded/unloaded)	m/min	WITHOUT LOADx300 WITH FULL LOADx600																					
Max. Draw bar (loaded)	kN	60	60	60	58	60	60	60	60	60	60	58	42	40	48	48	47	47	47	47			
Max. Gradability (loaded/unloaded)	%	34/19	31/19	29/19	23/20	21/20	35/19	32/19	27/20	23/20	36/19	31/19	29/19	23/20	23/19	20/19	20/19	20/19	19/19	19/19			
Weight (incl. included)	kg	8300	8950	9500	11400	12010	8300	8950	9500	11400	12010	8300	8950	9500	11400	8300	8950	9500	11400	12010			
Axle load (loaded/unloaded)	kg	11800/1300	13300/1370	14600/2050	17760/2150	20030/2480	11800/1300	13300/1370	14600/2050	17760/2150	20030/2480	13000/1400	14500/1550	17845/2050	20147/2090	17845/2050	17845/2050	17845/2050	17845/2050	17845/2050			
Axle load (unloaded/unloaded)	kg	4059/4100	4005/4895	3900/5600	5360/6040	5510/7000	4059/4100	4005/4895	3900/5600	5360/6040	5510/7000	4130/4170	4066/4995	3870/5780	5082/4648	5370/7090	4130/4170	3740/4990	3870/5780	3810/4170			
Engine specifications						Perkins 1100D-40TA						Cummins CDB4.5						Mitsubishi S6T5					
Engine manufacturer (model)	Perkins 1100D-40TA						Cummins CDB4.5						Mitsubishi S6T5										
Engine rated power/international speed	83/2200						82/2200						63.9/2300										
Engine rated torque/international speed	418/1400						418/1400						280/1700										
Cylinder number	4						4						4										
Engine displacement	4.4						4.5						4.3										

5-7t WIDE VIEW MAST

